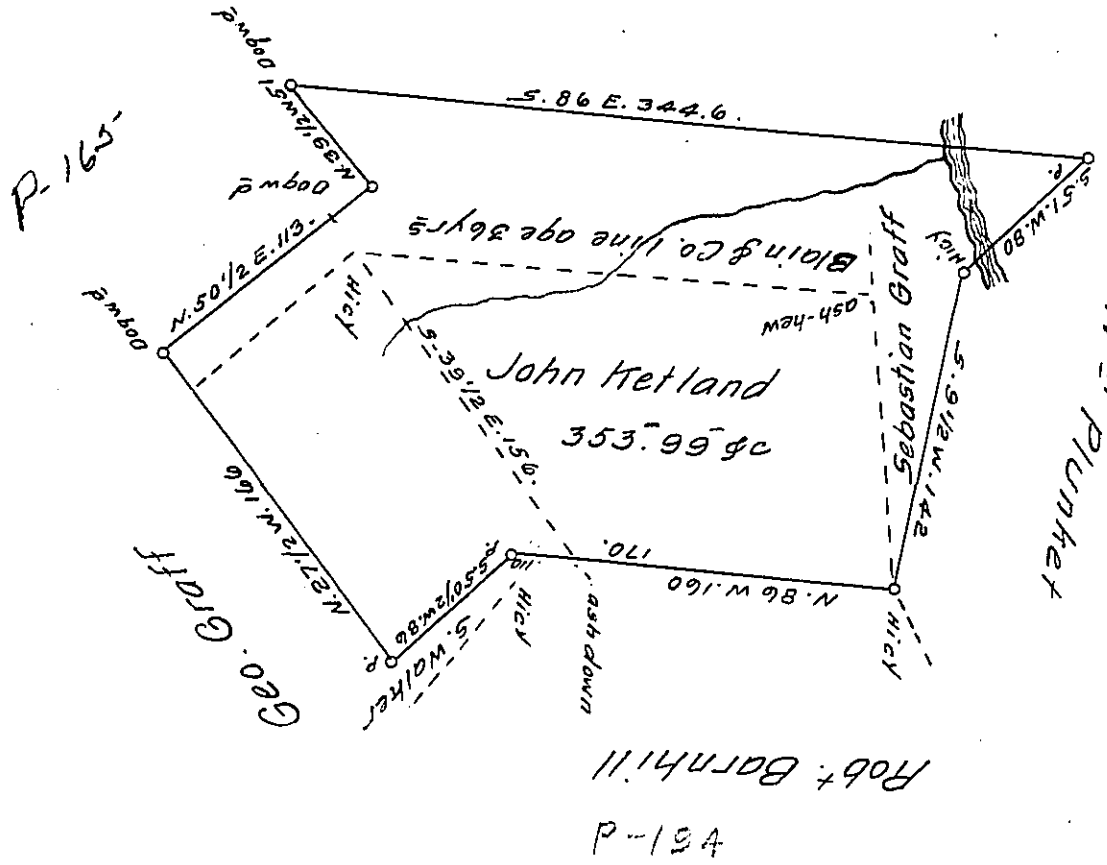


	N	S	E	W
S. 9 1/2 W 142	140.05		23.45	
N. 86 W 170	11.86		169.69	
S. 50 1/2 W 86		54.70		
N. 27 1/2 W 186	146.24		76.62	
N. 50 1/2 E. 113	71.88		87.19	
N. 39 1/2 W. 51	39.35		32.44	
S. 86 E. 344.6		24.01	343.17	
S. 51 W. 80		50.35	62.17	
	270.03	249.11	430.36	430.66
		+6	+6	



Situate on Clearfield Creek alleghany township cambria County  
 Surveyed the 12<sup>th</sup> ~~th~~ april 1797 by John Canan Esq on a war-  
 rant dated March 10<sup>th</sup> 1797 & Resurveyed Sept 18<sup>th</sup> 1820. on an  
 Order of the board of property, dated Sept 7<sup>th</sup> 1810. Showing  
 the Interference of Sebastian Graff & Alexander Blain & c

Jacob Spangler Esq  
 Surveyor General

W. O. Keefe  
 D. S.

IN TESTIMONY that the above is a copy of the original remaining on file in  
 the Department of Internal Affairs of Pennsylvania, made  
 conformably to an Act of Assembly approved the 16th day of  
 February, 1833, I have hereunto set my Hand and caused  
 the Seal of said Department to be affixed at Harrisburg,  
 this nineteenth day of January 1912.

*Henry Horner*  
 Secretary of Internal Affairs.